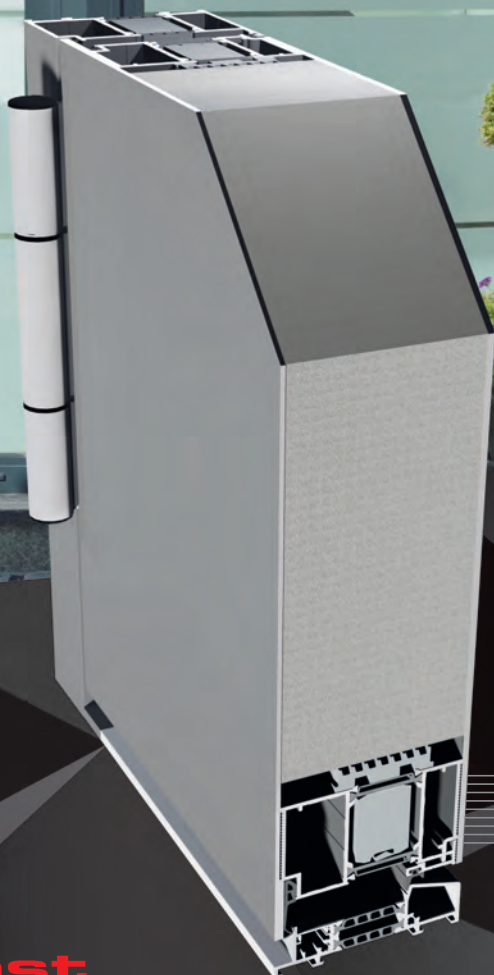


PD

PANEL DOORS



A thermally insulated aluminium system used to design panelled doors.

PD

A thermally insulated aluminium system used to design panelled doors. With modern technical solutions applied, the panelled doors can serve not only as a functional and durable house entrance, but also a showpiece and decoration.

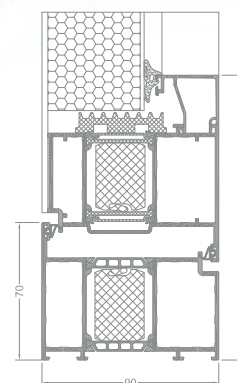
The system is characterised by a range of infill panels available in various patterns and colours. An elegant look of the structure, available dimensions, the option of installation within a larger front frame provide a lot of freedom while arranging the building entrance.

The load-bearing structure of the panelled door system is ensured by the STAR system, and therefore the doors provide excellent thermal performance. This actually translates into the comfort inside the building and the costs of building operation.

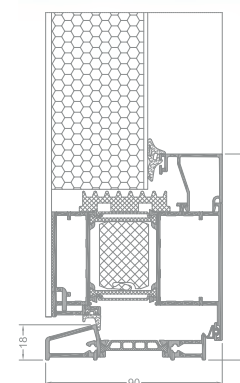
Technical description of the system:

- one plane of the frame and the panel bonded onto the leaf (panel bonded from the external side or double-sided).
- two possible types of hinges: roller hinge – dedicated to the Star system, concealed hinge (Dr.Hahn).
- standard 3-point locks or self-locking devices – to be selected by the customer
- handles, pull elements on the internal side to be selected from the standard offer of Aliplast.

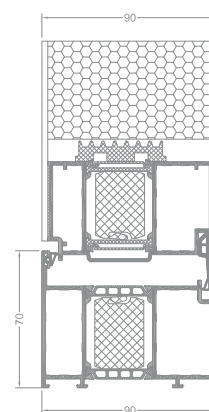
A wide range of colours available - RAL palette, structural colours, Aliplast Wood Colour Effect, bi-colour.



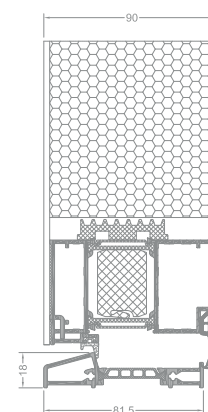
Panel doors section,
panel one sided, opens inwards



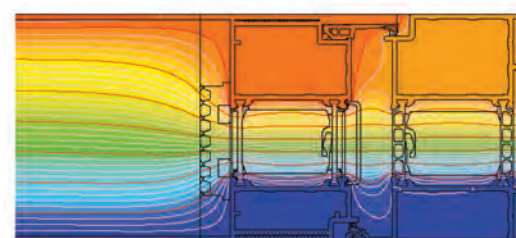
Panel doors section,
panel one sided, opens inside



Panel doors section,
panel two sided,
opens inwards



Panel doors section,
panel two sided,
opens inside



distribution of isotherms for frame with sash composition in door
system Panel doors (GT 415 + GT 626)

TECHNICAL SPECIFICATION

SYSTEM	MATERIAL	DEPTH OF FRAME	DEPTH OF LEAF	GLAZING RANGE	TYPE OF WINDOWS	TYPE OF DOORS
PD	aluminium / polyamid	90 mm /	99 mm /	panel one sided 22-83 mm panel two sided 90 mm	—	single doors, outside opening, inside opening

PERFORMANCE

SYSTEM	THERMAL INSULATION U_f *	AIR PERMEABILITY	WINDLOAD RESISTANCE	WATERTIGHTNESS
PD	U_d from 0,73 W/m ² K for door: 1200 x 2100 mm	Class 4; EN 12207	E2400; EN 12210	7A (300 Pa); EN 12208

* Thermal insulation is dependent on a combination of profiles and thickness of the filling.